



Water Management E-Toolkit



**SUSTAINABLE WATER USE
BIRMINGHAM**

Contents

Overview	2
About Us	3
Benefits	4
links	5
General Operation	6
Kitchen	7 - 8
Bathroom	9
Water Saving Tips	11
Case Study: RSPB	12
Clickable Links	13-14



1

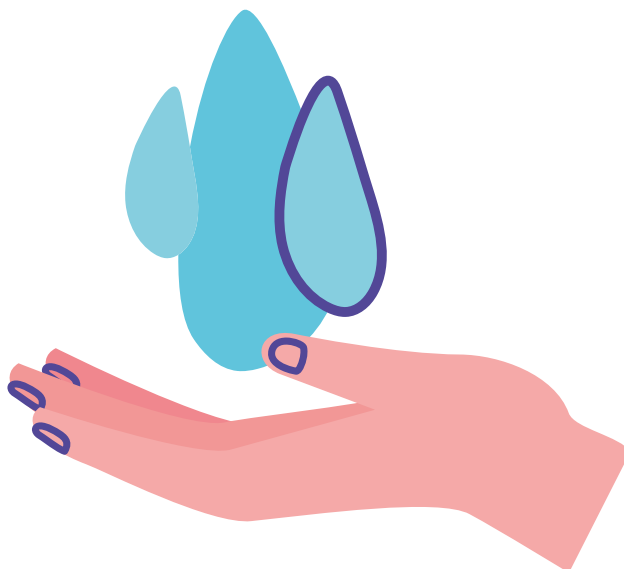


Overview

Due to climate change the UK will experience hotter and drier summers. By 2040, more than half our summers will exceed 2003 temperatures. This will mean more water shortages: by 2050, the amount of water available could be reduced by 10-15%, with some rivers seeing 50%-80% less water during the summer months. This will mean higher drought risk.

Sir James Bevan, Chief Executive of the Environment Agency,
Waterwise Conference, 19th March 2019

By following the practices to reduce water consumption highlighted in this toolkit, businesses can reach their sustainability targets, save money and reduce pressure on natural resources.



About Us

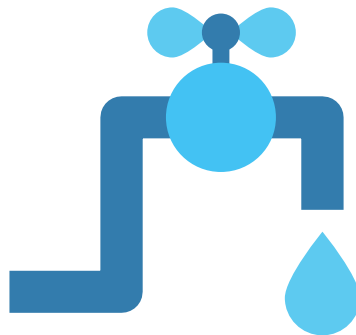
We are Sustainable Water Use Birmingham

We are a social action striving to raise awareness of the climate change effects caused by corporations and the public's water waste.

Our team is made up of five female, young professionals wanting to make real environmental change within our local area of Birmingham.

The team is made up of:

- Yusra Ahmed
- Pavan Bains
- Najma Haroun
- Holly Hughes
- Angie Morley
- Sophie O'Connell



We were brought together by UpRising UK's Environmental Leadership Programme where the participants were tasked with developing a social action campaign on an environmental issue.

For even more great ways to reduce your water consumption follow us on:



@SWUBham



@swubham

For general enquiries email us at:

sustainablewaterusebirmingham@gmail.com



Benefits

Environmental issues are interlinked. Using less hot water will not only reduce water consumption but also lower your energy bills.



Another benefit to you will be an improved brand image through taking these steps to be environmentally conscious with water use.





**SUSTAINABLE WATER USE
BIRMINGHAM**



#TapTips

General Operation

1

Compare past and current water bills to identify any changes.

Miscellaneous water usage could be due to a leak which you should check out. A reduction in water pressure and cracking in paved areas are tell-tale signs of a leak.



2

Raise employee awareness

Schedule a short, compulsory training session to raise awareness of the problem. We can provide you with resources for this training session or even facilitate it! Make employees aware of the SWUB checklist, which someone will be responsible for filling out each month.



3

Display our posters.

Boost the water efficiency of your businesses by displaying water saving posters and stickers at key locations. You can put up our posters which we will post out to you free of charge.



Kitchen

1

Invest in a 3-compartment sink.

3-compartment washing basins are a more efficient use of water than filling up large farmhouse kitchen basins which use excessive amounts of water. In the first sink, fill with water and soak the dishes. In the next sink, use a scrub pad to remove any food residue. In the last sink fill with water to rinse the dishes of any left-over soap.



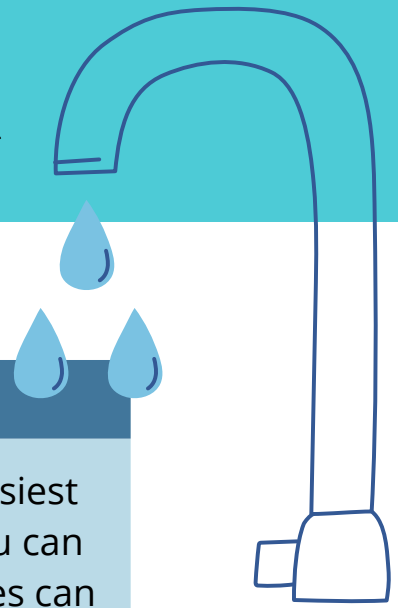
2

Reduce food waste to reduce indirect water waste.

An abundance of nutrients and flavour is held within the skins and stalks of food. Prevent these from going to waste by using them to create stocks, soups and sauces. Sign up to apps that prevent food waste such as Too Good To Go, Olio and Karma. This will reduce your water and carbon footprint and support your local community.



Kitchen



3

Use water saving devices.

A low-flow pre-rinse spray valve is one of the easiest and most cost-effective water saving devices you can install. An efficient, low-flow pre rinse spray valves can save 84 gallons of water per hour of use. They also use hot water to rinse dishes so by saving water, you are also saving energy.

Use a basin.

4

On average a running tap releases 1 liter of water every 10 seconds.

Therefore, filling a basin with water to wash fruit and vegetables in is a easy way to prevent unnecessary water waste.

Only boil the water you need.

32 million litres of water are boiled every day in the UK only to go cold again. Only boiling what you need can result in millions of litres of water being saved each day. Also each time you boil water it loses more oxygen which can result in an unfavourable cup of tea.



5

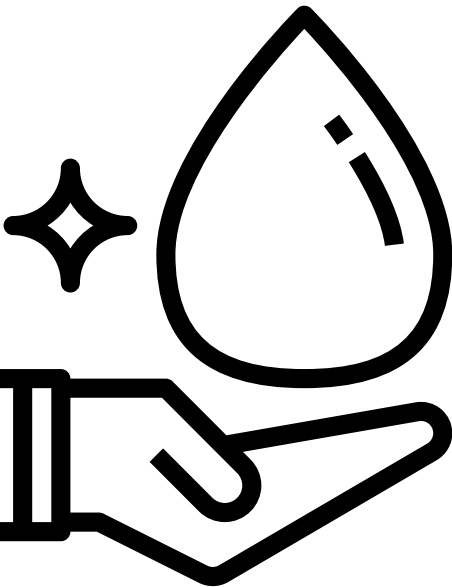
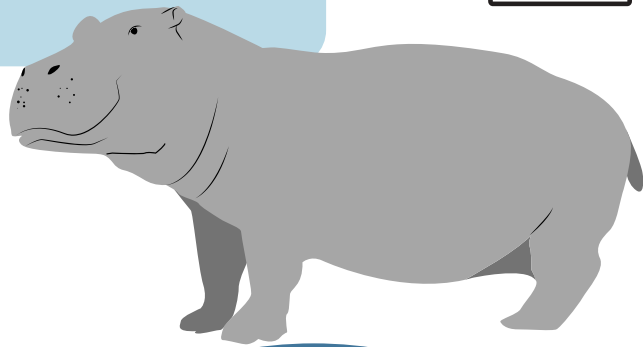
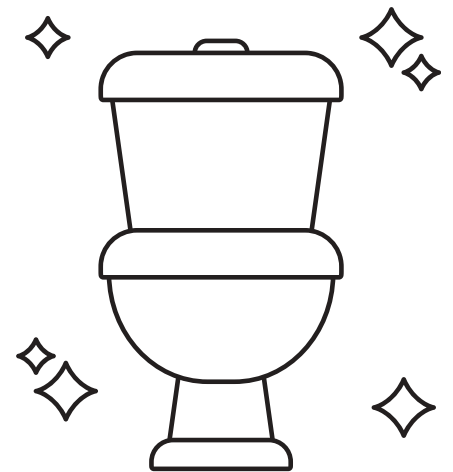


Bathroom

1

Order a toilet hippo.

Cistern displacement devices such as the Hippo bag can save up to 3 litres of water per flush, by taking up space in the cistern thereby reducing the amount of water that is stored there. To order your device see our links page.



2

Low flow aerators are simple attachments, that fit easily onto almost any tap. They mix air into the water thereby reducing the flow of water. This saves both water and energy whilst leaving water pressure unaffected. Adding an aerator to a older tap can save up to 40% of the amount of water.



change
climate
change

change
climate
change
change
climate
change

change climate change



**SUSTAINABLE WATER USE
BIRMINGHAM**

change

Water Saving Tips

Make sure your dishwasher is fully loaded before use!

Ofwat

#TAPTIPS



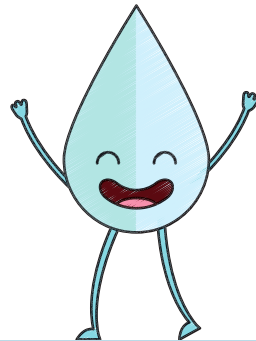
Don't leave the tap running. Fill up a water bottle and keep it in the fridge!

#TAPTIPS



When you over boil in a kettle, transfer the water to a thermal flask for later!

#TAPTIPS



Here are some additional simple and easy water saving tips you can implement in your workplace. We are constantly sharing tips on our socials! @SWUBham



Case Study: RSPB

The RSPB offices in Birmingham have implemented many water saving strategies as detailed below. These practices also extend to RSPB nature reserves in a number of ways.

- They have installed an Aquapoint unit under the sink in the office, which ensures that hot water is ready for users. It saves people time and the premises energy and water. Operating at 2KW, this unit uses much less electrical energy as instant water heaters that typically do not drop below 3-4KW. It means of course that when people wash their hands for example the hot water is instantaneous and stops them wasting water needlessly.
- They also have an instant hot water boiler for making tea and coffee, rather than using a kettle. This ensures people use only what they need to fill a cup rather than filling a kettle and again ensuring that we are wasting as little water and energy as possible.
- The office dishwasher has an eco-setting which uses less water and workers always ensure the dishwasher is full before the cycle is started.
- During 2009/10, the RSPB worked with water management company, Aqualogic, to make our visitor centres and offices more water efficient.
- At The Lodge and at over a dozen nature reserves, water audits were done and replacement fittings in toilets and kitchens were installed. These are giving significant water savings over just a few months (a single urinal control typically saves over 267,000 litres or 470,000 pints of water annually).
- All new or refurbished buildings on reserves continue to be designed to the highest water efficiency standards with features like waterless urinals and rainwater harvesting for toilet flushing.



Clickable Links

United Nations Global Compact – CEO Water Mandate

This mandate is a commitment platform for business leaders and learners to advance water stewardship.

Endorsing companies commit to action across six key elements and report annually on progress. In doing so, they cut costs, build brand value and reputation, manage business risks and advance water security for their business, ecosystems, and communities alike. The Mandate is now endorsed by over 150 companies such as Microsoft, Nestle and Coca Cola, large corporations, and businesses from a range of industry sectors and different regions around the world.

Waterwise - Save Water

Waterwise are a great non-profit organisation who like us want to help communities and businesses save water. They carry out research, influence policy and provide essential water saving training!

Finish UK

Finish UK (yes, the dishwasher tablets) recently partnered with National Geographic and Love Water Campaign to raise awareness of water shortage in the UK.



Clickable Links

Water Companies saving water:

Get tips and water saving devices from your water company!

*This is not an exhaustive list

Severn Trent - Midlands (Birmingham and Nottingham)

South Staffordshire - West Midlands, South Staffordshire, South Derbyshire, North Warwickshire and North Worcestershire areas.

Northumbrian Water - Northumbria.

Anglian Water - East of England and Hartlepool.

Yorkshire Water - Yorkshire.

Thames Water - London and the Thames Valley.

Southern Water - East Kent, parts of Sussex, Hampshire and the Isle of Wight.

Wessex Water - Bristol, most of Dorset, Somerset and Wiltshire, some parts of Gloucestershire and Hampshire.

Ofwat

Ofwat are the economic regulator of the water sector in England and Wales. They are a non-ministerial government department and help to ensure trust and confidence with customers of water companies.

